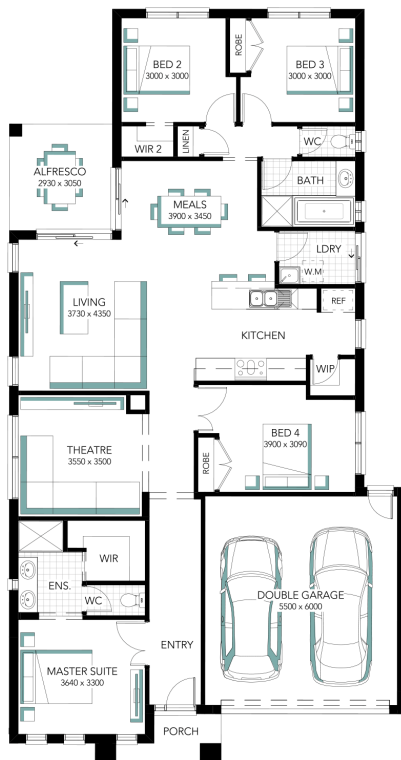




## Ashgrove 23



| ADDRESS                                   | LOT WIDTH | LOT SIZE              | HOUSE SIZE            |
|---|-----------|-----------------------|-----------------------|
| Lot 211 Mynard Road, Leneva Valley Estate | 14.00     | 762.00 m <sup>2</sup> | 208.68 m <sup>2</sup> |



### Your Inclusions

**Gavan Schultz**

0417125724  
gavan.schultz@davissandershomes.com.au

All prices quoted in this document are for blocks up to 700m<sup>2</sup> in local urban areas on a flat site with up to 'M' type soil classification. Sloping blocks will incur additional costs and will be quoted separately. Prices are for the 'Neo' façade. Other façade options are available. Bushfire Attack Level - all costs to be advised after site assessment and calculation of BAL rating. All prices are subject to change to accommodate energy rating requirements specific to the clients proposed building site, all additional costs to be advised after energy rating. Prices are subject to change without notice.